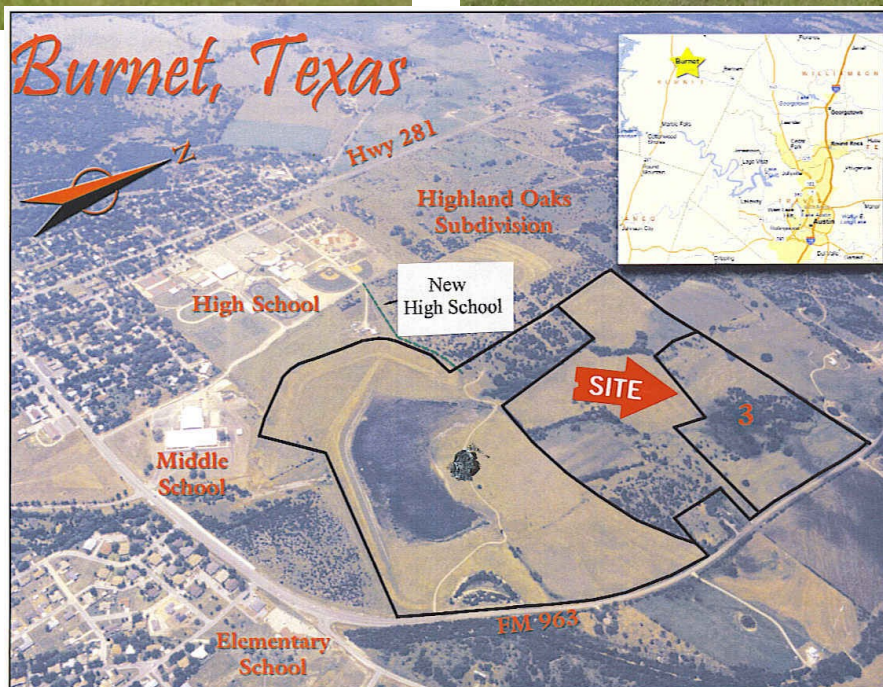
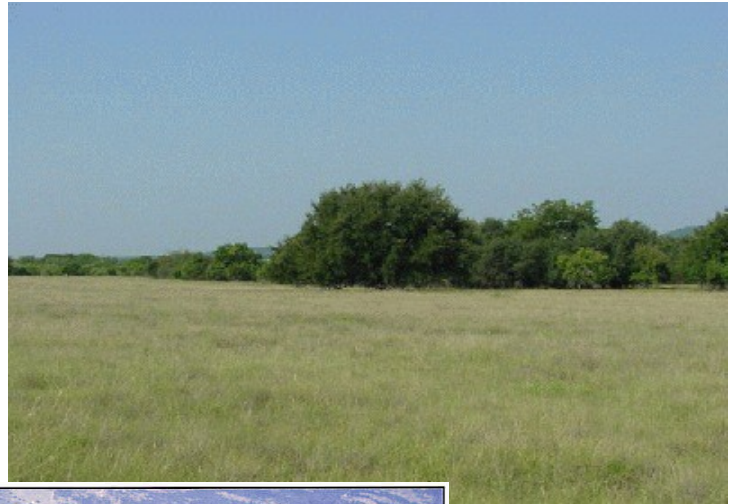




Burnet County Investments/Development Tract 44± Acres

PRICE REDUCTION! ATTENTION INVESTORS/DEVELOPERS - 44 acres inside the City Limits of Burnet on FM 963 within a 1 1/2 mile radius of ALL Burnet Schools. This property is well located with over 1400' of road frontage. City utilities close by, this property offers unlimited potential. Currently zoned Ag 1 and under Agricultural Exemption for tax purposes.

PRICE REDUCTION: \$219,000



16 offices serving the entire state

RANCH INVESTMENTS

800.447.8604 • WWW.RANCHINVESTMENTS.COM

INFO@RANCHINVESTMENTS.COM